



Coming Home to Diobsud: Salmon Lead, Wildlife Follow

A few miles northeast of Marblemount is Diobsud Creek (deye-AWB-suhd), a small but important tributary to the Skagit River. Diobsud's headwaters emanate in the glaciated peaks and alpine lakes of the federally-designated Noisy-Diobsud Wilderness

before flowing downhill about 10 miles, making a brief appearance on the valley bottom, and then joining the Skagit. This relatively short waterway is home to many a conservation success, thanks to the partnership of private landowners, public agencies and the ongoing support of Skagit Land Trust's members.

Home to spawning grounds for the mighty chinook (king) salmon, as well as steelhead, chum, and numerous other important aquatic species, Diobsud Creek has long been a target for conservation efforts. Beginning with a project in 1997, Skagit Land Trust (the Trust) helped private landowners Linden Jordan and Mary Kay Barbieri protect 11 acres in the Diobsud watershed through a conservation easement. In 2002, the Trust assisted the U.S. Forest Service in protecting nearly 40 acres along Diobsud Creek. Last year, the Trust acquired 25 acres of beautiful mature forest along the creek with assistance from you, our members, the Washington State Salmon Recovery Funding Board, and Seattle City Light. Two more fish-related projects are in the works. As a result, Diobsud Creek now has one of the most protected watersheds in the Skagit.

This area not only hosts protected salmon runs; the wolves have returned as well! A pair of breeding wolves, named the "Diobsud Pack," have established their range in this small valley. The first wolf pack in Western Washington in



BOARD OF DIRECTORS

Jim Glackin, *President*
Mount Vernon

Mark Hitchcock, *Vice President*
Samish Island

John Hunt, *Treasurer*
Anacortes

Warren Walz, *Secretary*
Anacortes

Roger Fuller
Anacortes

Carolyn Gastellum
Anacortes

Jack Hartt, *Member Elect*
Sedro Woolley

Steven H. Johnson
Anacortes

Karen Krub
La Conner

Rusty Kuntze
Bay View

Harold Lee
Mount Vernon

Mark Linnemann
Guemes Island

Tim Manns
Mount Vernon

Curtis A. Miller
Fir Island

Kathy Thornburgh
Mount Vernon

Barbara Trask
Concrete

Anne Winkes
Conway

Keith Wiggers
Burlington

STAFF

Molly Doran
Executive Director

Michael Kirshenbaum
Conservation Director

Laura Hartner
Development Director

Martha Frankel
Membership & Office Admin.

Kari Odden
Conservation Project Manager

Jane Zillig
Conservation Project Manager

Regina Wandler
Stewardship Manager

Hannah Williams
Conservation Assistant

Stacy Dahl
Volunteer & Education Programs

Debbie Ensey
Auction Coordinator

Michele Onorato
Accountant

Phil Buri, P.S.
General Counsel

Message From the Board President

Dear Members and Partners,

Hello and a warm welcome to the Skagit Land Trust's summer newsletter. This spring marked my third full year on the Land Trust Board. It has been a learning, growing and eventful experience! It's an honor to work with such a knowledgeable board, competent staff, and dedicated volunteers on the important work of protecting and stewarding wild places throughout Skagit County.

I arrived on the board shortly after major land acquisitions on Guemes mountain. During my short time on the board we as an organization have managed to protect Kelly's Point on Guemes Island and the Samish Flower Farm property on Samish Island. Both of these acquisition campaigns required a lot of coordinated effort by staff, volunteers and community members. They were both large projects that made staff dig deep to come up with solutions for complicated land issues and, thanks to a lot of community, member, and volunteer help, we were ultimately very successful.

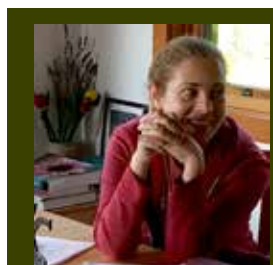
Also during this time, we concluded a major transfer of properties from The Nature Conservancy to Skagit Land Trust. We will steward these important properties in the upper area of the Skagit River basin in perpetuity. The fact that this transfer occurred speaks to the respect and trust our organization receives on the state and national conservation scene.

It has been an eventful three years and I can see as new properties present themselves that much more is on the horizon. We're currently involved in looking over our strategic direction for the next five to ten years.

Throughout my time on the board, I have grown to understand that acquiring property into the Trust is crucial to preserving it - but that's only half the battle. We as an organization need to steward these properties, and not just for a few years, but for a very long time. This effort first requires planning. But ultimately what is needed are the resources of time on the ground and funding to make sure that we are good stewards. And again, not just for a few years, but for a very long time.

Many important opportunities to acquire and protect lands and habitats present themselves to the Trust. My goal as a board member - as I suspect is yours as well as you read this - is to work to make sure the Skagit Land Trust is in a position to take on as many of these opportunities as we responsibly can. Thank you for your financial support and active interest in the Skagit Land Trust!

- Jim Glackin, Skagit Land Trust Board President



Thank you Jen

This spring, board member Jen Sevigny stepped down to focus on her work as a wildlife biologist with the Stillaguamish Tribe. Luckily the Trust will continue to work with Jen on our Upper Skagit River wildlife projects. Thank you Jen, for your dedication to the Trust.

nearly a century has joined the chinook in calling Diobsud home. This news is an endorsement for the establishment of wildlife corridors as a benefit to multiple species. It turns out that what's good for the salmon is good for wolves as well.

Look no further than the recently protected Hidden Valley Ranch conservation easement on the Sauk River (see below) for more evidence of salmon leading the way. 18-acres of this beautiful property have been protected by the Trust with cooperation from the landowners, weaving together open space, agricultural land and a wide, natural buffer along the Sauk River. This property was protected primarily for salmon habitat, but wildlife cameras on the property have also captured pictures of the endangered fisher – recently part of a re-introduction program – and mountain cougar.

From the mighty Sauk and Skagit rivers, to the countless small tributaries like Diobsud, these critical stream and river corridors could have been further developed and degraded. Instead, they are protected forever and restored, but only because Trust members continue to support our day-to-day work of knitting landscapes back together. Your support allows us to pursue grants, work with partners, and implement the Trust's Conservation Strategy to save land for future generations.

We're lucky to live in a state where our members' support can open the door to grants and other funding opportunities to make even a small creek like Diobsud have a big impact. Without the ongoing and consistent support of land trust members, donors, and volunteers, the Trust wouldn't be in the position to take advantage of opportunities to save the best of the Skagit. As the dramatic successes at Diobsud Creek show, what starts as one small project can turn into a large conserved and functioning landscape. Just ask the salmon, and the wildlife that follow them.

Landowners Seek the 'Better Angels of Nature' to Protect Their Property

Last month, Skagit Land Trust worked with landowners Pete Delachapelle and Claudia Maple to forever protect almost 20 acres of salmon habitat and open space on the Sauk River between Rockport and Darrington. Below is a letter they wrote about their new conservation easement on what is known as Hidden Valley Ranch:



Claudia Maple on her farm

"We love our property. We wanted to protect the farm and wild aspects of the property. We realized that good intentions might not be good enough protection over time and ownership changes. We needed to listen to the better angels of our nature now, and lock in land use protections for the future.

A conservation easement with Skagit Land Trust was a great mechanism for providing lasting protection. The people of the Trust are professional, smart, kind, and also really cool. In Skagit Valley, they are the better angels of our nature.

A previous owner of our property came by one day. He was living in an old folks home and a caretaker had taken him out for a birthday drive. As Claudia was showing him around, he got choked up and tearful. He was very grateful and very happy that his farm was still intact and making a comeback. He was moved to tears.

Now it's our turn to get a little choked up. We probably won't get the opportunity to come back to check up on things after the next generation has taken over. But we won't need to. Thanks Skagit Land Trust"

-Pete Delachapelle & Claudia Maple



Above: Pete Delachapelle Left: The endangered fisher walking from the farm to the Sauk River shoreline which is protected by the Trust.

Thank you for all the ways you support land conservation here in the Skagit!



As a member of Skagit Land Trust you are protecting local waters, forests, and the wildlife that depend on these places for survival.

When you volunteer at a Trust event, shop at a business that supports the Trust, and share our posts online, you are spreading the word about the great work we are doing together.

Donations also come to the Trust in a variety of forms and we are grateful for each of them. **If you are curious about the different ways to give, please contact Martha at 360-428-7878 or marthaf@skagitlandtrust.org.**



Make a QCD from your IRA

If you are 70 1/2, you can make a **qualified charitable distribution from your IRA account** directly to the Trust without that gift counting as "income". Studies show that gifting directly from your IRA is one of the most tax beneficial ways of giving to charity. While donations can't be claimed as a charitable deduction, donors can realize substantial benefits by reducing their taxable income.



Donate Stocks or Securities

Donating stocks, bonds, and mutual funds can be an easy way to give to the Trust. If itemizing, you'll generally take a tax deduction for their full fair market value. In 2019, donating appreciated stocks, bonds, or other assets instead of cash still avoids all capital gains taxes regardless of whether or not a donor itemizes their taxes. Please contact the Trust for forms you can give your broker.



Maximize your Membership Impact – as a Skagit Sustainer

Skagit Sustainers give automatic monthly or quarterly donations, rather than making one annual membership contribution. This minimizes our mailing costs and paper use, which allows us to do even more with your dollar. Knowing a steady source of revenue will be coming in helps us stretch. We can put a down payment on a property, double our field trips with schools, or increase the stewardship projects we take on in the next year.

Being a Skagit Sustainer can be easier on your budget, and you don't have to wonder if your membership is current- it always is! Your automatic payments continue until you decide to stop them.

Here are four easy ways to be a Skagit Sustainer:

- *Direct Transfer from your checking account to ours can be set up by clicking the Donate Now button on the top of the page at skagitlandtrust.org. Use the "echeck" option instead of "credit card".
- *A bank issued check can be set up from your bank and mailed to us each month/quarter.
- *A credit card payment can be set up online at skagitlandtrust.org. Use the "credit card" option instead of "echeck". You can also opt to pay the credit card fee, which really maximizes your donation.
- *If you work for a larger company that offers an Employee Matching Gifts Program, you can make a recurring automatic gift through your employer- who transfers the funds to us- and may match your gift up to 100%.

Messing Around in Creeks Inspires Land Conservation Richard & Sharon Stewart's Natural Legacy

by Molly Doran



It was a rainy January day in 2012 when a casual visit to Skagit Land Trust culminated in protecting the Bell Property near Big Rock - and so much more. A fellow with a jaunty tweed Irish paddy-cap stood dripping in the office foyer. He introduced himself as Rich Stewart and asked if I had time to talk about creeks. He regaled me with stories of his childhood and the joy he and his friends had "messaging around" in creeks near Olympia and in Seattle ravines. And then he told me that he had recently visited the creek on the Bell Property and it had really called to him. Rich said that he and his wife, Sharon, wanted to find a way to help us conserve it. And they did - by putting forward a generous challenge match through the Skagit Community Foundation to help Skagit Land Trust purchase the land and add it to our Barney Lake Conservation Area.



Since that January, several of us at the Trust have been welcomed into the Stewart's home, walked their beautiful Fir Island farm and wildlife sanctuary, and listened to their dreams. Sadly, Rich passed away suddenly in February of this year. Sharon called me soon afterwards and told me that conserving their own land was so important to them both, that she was going to note it in Rich's obituary.

"We feel privileged to give our land back to the Skagit Valley," said Sharon. "We have loved living here, and want to give back that which wasn't "ours" in the first place."

For decades, Rich and Sharon Stewart have been living a rural life, lovingly stewarding their land, and quietly helping the communities they are rooted in. I think back to that day when Rich so joyously told me about his time "messaging around" in creeks. That phrase is defined in the dictionary as "to waste time without a particular purpose". I think Rich and Sharon would say the dictionary gets this one wrong. It was unstructured time in nature that helped them both kindle and act on their love of nature. Rich and Sharon are leaving a natural legacy that will give back to people, wildlife and future generations, forever.



Sharon proudly posed with her gang of chickens when she presented the Trust with another gift - our first vehicle donation.

Join our Cedar Legacy Roundtable on September 4th

The Trust will be hosting an appreciation and roundtable **event for Cedar Legacy Members at the Padilla Bay Interpretive Center on September 4th from 3-5pm**. We want to hear your thoughts about the strategic direction of Skagit Land Trust. Look for your invitation in the mail this July. Cedar Legacy Members have included Skagit Land Trust in their estate plans. **If you have included the Trust in your estate planning, please let us know so we can include you in this event and honor the gift you are giving the community.**

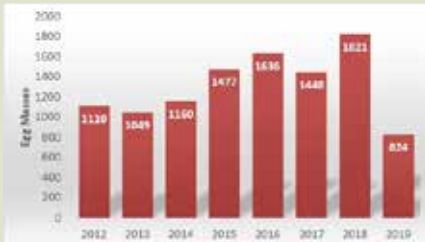
Amphibian Monitors Come Up Dry on Egg Mass Counts

The ground was covered in snow on March 10th when 16 of our citizen science volunteers and land stewards visited Green Road Marsh to begin the annual survey of amphibians on Trust properties. There were no signs of eggs, but a few frozen juvenile amphibians came to life in the warm hands of the volunteers.



Volunteers at Green Road Marsh.

These cold, dry conditions continued throughout March and April. During this time, volunteers made 15 visits to eight Trust properties to survey egg masses and look for evidence of the endangered Oregon Spotted Frog. While this species was not found, the group did record Pacific chorus frog, red-legged frog, long-toed salamander, and northwestern salamander egg masses.



Total egg masses found over the years.

The egg mass total for this year was 824, half of the number found the past four years. This drop may be due to the cold weather in February, or less rain this season. Yearly data collection allows scientists and Washington Fish & Wildlife to track long term trends in the local environment.

Thank you to Janet Cray, Tim Manns, Dennis Dagley, John Moore, Zena Gavin, Kathy Anderson, Emerson High School, Hal Lee, Janet Nevitt, Mike Oros, Julie Newkirk, Brenda Cunningham, Russ Dalton, Lin Skavdahl, Tara McGown, Mark Malone, and Joan Declaire for contributing 105 hours to these surveys. We hope to see many returning and new citizen scientists next year!



To the left: Emerson High School students surveying at Big Lake Wetlands as part of their Conservation Classroom program. They were great citizen scientists!

Kids Take Over Utopia and Find it the Ideal Place to Learn on the Land

279 Sedro-Woolley second graders visited the Trust's Utopia property this spring over five days. With their 86 chaperones, they learned about beaver, elk, amphibians, macroinvertebrates, plants and birds, while visiting six Investigation Stations scattered throughout the restoration area.



Dear Stacy,
 Thank you so much for setting up the station. Also thank you for setting up the beaver station because I love beavers.
 From,
 Caden

Dear Joe,
 The Bird Station was cool because we were supposed to see the Treeswallows and we actually got to see the TREESWALLOWS!!! It was amazing! Thank You Joe.

Thanks to Richard Raisler, Ellen Anderson, Kit and Carol Harma, Jim Johnson, Chris Varela, Kent Turner, King Dahl and intern Phoebe Jud for facilitating the stations! Along with Trust AmeriCorps Members Zena Gavin and Meagan Maillet, these volunteers helped the kids watch tree swallows through binoculars, use hand lenses to discover mayfly nymphs, and showed how plants slow erosion and absorb pollutants. **The students showed an 88% increase in knowledge of the natural environment after their exploration of the property.**



Volunteer Ellen Anderson showing students an elk antler during their visit to Utopia.

The children had a chance to hold a beaver skull, measure an elk antler and talk about habitat while searching for amphibians. Students from Lyman, Samish, Central, Evergreen and Big Lake Elementary Schools discovered garter snakes slithering through the grasses, found insects scurrying over the ground and wrinkled their noses at coyote scat on the trail. **Students left expressing the importance of protecting habit for wildlife, and excited to visit such environments again.** It was a fun and educational introduction to Skagit Land Trust for these future stewards.

Samish Flower Farm - Conserved Forever!

Thanks to support from 500 families, businesses, and organizations, Skagit Land Trust has conserved Samish Flower Farm forever.

Located at the entrance to Samish Island, Samish Flower Farm is the forested “coming home” view for Islanders and visitors. The 100+ year-old forest that encompasses both sides of Samish Island Road, provides nesting, roosting, perching, and foraging habitat for a variety of raptors such as the Bald Eagle, Osprey, Cooper’s Hawk, and owls, as well as migratory song birds. It is also a staging and feeding area for herons that nest nearby, and features 500 feet of natural shoreline that feeds into Padilla Bay.



The forest of Samish Flower Farm as seen from the road to Samish Island.

The creation of the Samish Flower Farm Conservation Area is a testament to the community’s love and support for this unique property. Without conservation ownership, the property could have been cleared and subdivided into numerous smaller lots. The purchase of these 34.25 acres ensures that the land will remain forever undeveloped.



Pictured from left to right, Conservation Director Michael Kirshenbaum, Samish Flower Farm Project Manager Jane Zillig, and Executive Director Molly Doran on the Padilla Bay shoreline.

“All of us are so grateful that our community came out in full force to support this project,” says Trust Executive Director Molly Doran. “This forest is a huge part of the Island’s character and we all know how precious natural shoreline is. Padilla Bay holds the second largest bed of seagrass on the west coast of North America. It is critical we keep it healthy. Our objectives are to steward the property as wildlife habitat and provide ways for public access for walking and wildlife viewing. Low impact access can help engender conservation and education of Salish Sea habitats.”

Thank you to all of the donors who helped save the Samish Flower Farm

Evelyn Adams
Kathleen and Thor Albro
Daniel Allison
Frances Ambrose and Steve Hunter
Aubrey Aramaki and Young Sun
Arbor Pacific Forestry Services, Inc
Howard and Thais Armstrong
M Audette
Caroline and Brian Baldie
Linda Ballantine
Marjie Bardan and Ed Hill
Dennis and Chris Barnes
Liz and Michael Bart
Lynn Beebe
Fred and Eva Beeks
Joline and Frank Bettendorf
Susan Bishop
Peggy Bissell and Jon Mills
Gary and Heidi Bletsch
Steven and Kathryn Bluhm
Ann Bodle-Nash and Rick Nash

Bonnie McFarland and Denny Organ
Meg Bossie
Brenda Bourns
Heather and Barney Bourns
Robert and Victoria Bourns
John and Kristen Boyes
Dorothy Bradshaw
Lucy Bradshaw
Mary Brady and Don Power
Mariepaule Braule
Peggy Bridgman
Jeff Brown & Margaret Catzen-Brown
Cath Brunner & Eric Riedel
John Buchanan
Matthew Buckner
Nathan Buckner
Connie Bush
Coleman Byrnes
Bonnie Campbell
Rebecca Cannon
David and Janet Cater

Mary Lou Caudill
Leon and Carroll Leonovich
Mark and Penny Chapman
Anne Stapleton
Sarah and Robert Christensen
Dionne and Richard Clasen
Cline Consulting, LLC
Dennis and Carolyn Coble
Molly Cohan
Asher and Cindy Cohen
Morty Cohen and Kathryn Cavi
Kathy Colton
Marc Coltrera and Anne Buchinski
Community Of Christ-Samish Island
Campground & Retreat Center
Community Of Christ In The Greater Pacific
NW Mission Center Membership
Gail Corbin
Landry and Susan Corkery
Shawn Crowley and Karen Petersen
Jocelyn Curry

Mel and Susan Damski
Nora Daniel
Jan Davis
Julie Davis
Nancy and Stephen Dean
Karen Desko
Beth Dewey
Bill and Joyce Dewey
Mary and Robert Dickinson
Robert and Janice Dionne
Molly Doran and Andrew Cline
Fonda and Ron Downs
Martin and Jessica Dubek
David and Clara Duff
Margaret Dunnington
Ann Dursch
James Eberhardt
Rob and Deb Eckley
Ralph Edfeldt and Bonnie Steussy
John Edison
Craig and Noma Edwards



Mother' of the Skagit Valley's Bulb Industry

1954 Seattle Times article about Mary Stewart's pioneering efforts in Skagit Valley's tulip farming.

The history of Skagit's tulips begins on the Samish Flower Farm. In 1903, the Stewart Family homesteaded the property. Mary Stewart began cultivating flowers that eventually developed into a successful mail order business called Tulip Grange Bulb Farms. According to the Skagit County Historical Museum, Mary is credited with starting the county's tulip bulb industry.

In 2017, the family listed the property for sale. A potential sale could have led to logging and the development of ten home sites on the property. In early 2018, the Trust and the family agreed to a conservation and sale solution. The family would keep their three acre homesite, and the Trust would purchase and conserve the rest of the property.

Mary's great granddaughter, Maggie Murphy, commented, "Our dedication to this property grew out of a farming history. We learned the land is regenerative and will give back more than it takes if cared for properly. We were honored for the opportunity to conserve this diverse ecosystem through Skagit Land Trust. A new chapter of stewardship will help protect these critical habitats that are on the edge of environmental peril. Our gratitude is beyond measure to the Trust and the greater Samish Community for joining our vision of preserving this fertile land in perpetuity. This is a dream come true."



Molly Doran from the Trust and landowner Maggie Murphy at Samish Flower Farm.



Jane Zillig, the Trust's Project Manager who oversaw the acquisition, says it was not only the incredible conservation values of this land that excited her about the project, but also the history of the property and the area. "The Murphy family, who sold us the land, have lived on this property for over 100 years and were responsible stewards of their land. In addition, the Salish Sea tribes have an extensive history on Samish Island. For the Trust to now be responsible for continued stewardship of this land is an honor that we take very seriously. Future generations will appreciate the efforts of the community of volunteers and donors who came forward to help preserve and steward this amazing landscape."

Project Manager Jane Zillig in the upper forested portion of the property, where trees are up to 100 years old.

Thank you to all of the donors who helped save the Samish Flower Farm

Karen Eichler
 Diane Eiesland
 Bruce and Cathy Entrikin
 John and Marie Erbstoesser
 Judy Farrar and Eric Knudsen
 Estuary and Salmon Restoration Program
 Christine Farrow
 Kurt and Sally Feldman
 Doriss Fennell
 Glen and Martha Fishel
 Bette Fitzgerald
 Marna Fletcher and Jeff Berger
 Glyn and Linda Fleury
 Hugh and Debbie Forbes
 Larry and Susan Forsythe
 Martha Frankel and Tom McFall
 Alex Free
 John Freeman
 Jeffris Wood Fund

Cathy Funk
 Gretl Dupres Galgon
 Marilyn Gardner
 Robert and Ellen Gatton
 Dave and Nancy Gillespie
 Herb and Theresa Goldston
 Kristine and Roger Goodan
 Charles Grace
 Marta Grace
 Grandy Lakes Forest Associates
 Ellen Gray
 Susan Gwost
 James and Karen Hadman
 Betty Haldeman
 Ramona Hammerly
 Fran Hansen
 Carol and Kit Harma
 Holly and Don Harper
 Deryl Hart and Pascale Michel

Hedgerow
 Jean Heflin
 Ruth Heft
 Alan and Ana Hergert
 Shellie and Jerry Hight
 Mark and Alison Hitchcock
 Amy Hockaday
 Ted and Beverly Hofer
 Glen Hoff
 Bill and Sharyn Hopley
 Steve and Gail Hopley
 Chuck Howell and Charlene Day
 Kathy Huckleberry and Mike Burr
 The Hugh and Jane Ferguson Foundation
 Doug and Suzanne Huttenstine
 Dale Hylton
 Chris and Pam Irwin
 Jim and Mary Jessen
 A. Elliott Johnson Children's Trust

Jim Johnson and Marilyn Kenney
 Ron and Patricia Johnson
 Helen Jones
 Linda and Dennis Jones
 Gordon and Barbara Jonsen
 Rosemary and Keith Kaholokula
 Lynn Karns
 Leah Keefer and Owen Ward
 Ron and Jo Keller
 Janene and Gerard Kenaston
 Matt and Bonnie Kerschbaum
 Kathleen and Richard Ketcham
 Carol Kirby & Douglas Thompson
 Linda Knapp-Strobel
 Marilyn Knutzen
 Beth Kraig and Suzanne Klinger
 Eric and Laura Kraig
 Jim Kuhn and Claudia Ross-Kuhn
 Rusty Kuntze and Libby Mills

With less than eight months to raise the funds needed, a steering committee of Samish Islanders and Trust board members helped secure funds and generate wide support for the project. They include Samish Island residents Thais and Howard Armstrong, Mike and Liz Bart, John and Kristen Boyes, Charlene Day, Fonda Downs, Roger and Kris Goodan, Steve and Gail Hopley, Chuck Howell, Lisa McShane, Therese Ogle, Marne Pennington, Jim Zielinski, and board members Jim Glackin, Mark Hitchcock, and Rusty Kuntze.



Pictured above: Executive Director Molly Doran with Samish Flower Farm steering committee members on the beach.

“Their dedication to preserving this property was crucial to the campaign’s success,” says Skagit Land Trust’s Development Director Laura Hartner. “They led tours, presented informational booths at summer events, supported challenge matches, and talked to just about everyone who cared about preserving the character of the entrance to Samish Island.”

The accelerated timeline also meant the Trust needed to purchase the property before all of the funds were in hand, so we reached out to The Conservation Fund for a \$500,000 bridge loan to assist with the \$1.24 million purchase, transaction, and stewardship costs of the project. Grants from the Washington State Estuary & Salmon Restoration Program and the North American Wetlands Conservation Act also helped considerably.

“Skagit Land Trust’s ability to quickly garner the support of so many individuals and groups to ensure that this ecologically valuable shoreline forest will be protected, speaks to the close knit community,” said Caitlin Guthrie, Associate Director of The Conservation Fund’s Conservation Loans program.



Photo courtesy of Rom Holmes. Great Blue Herons roost and feed on the Samish Flower Farm.

Samish Flower Farm is adjacent to the Samish Island Great Blue Heron colony, which has been established since at least the 1930s. While the rookery became abandoned in 2017, herons can return to nesting sites for up to 10 years, and herons still use this area for foraging and roosting. By protecting this property, the Trust ensures that additional nesting trees are available to the herons and serve as a protected buffer area to prevent disturbances.

Konrad and Herta Kurp
Trevor and Delberta Kyle
Hella and Harold Lee
Joseph and Brynn Leighton
Larry and Donnette Lennox
Frank and Donna Leonetti
Nancy Liggett
Diane and Martin Lind
Lisser & Associates
Craig and Anita Little
Susan and Robert Lord
Doug and Laurie Lundgren
Patricia Lundgren
Esther Luttikhuisen & Brad Claypool
Robert and Susan Lynch
Beau MacGregor & Ryan Castle
Mac and Linda MacGregor
Make It Matter LLC, Cecile Thomas
Robert Martin
Carolyn McCarthy & Kent Chasson
Mary Kae McCullough

Nan McKay
Phyllis and Donald McKeen
Ruth McNally
Liz McNett Crowl and Todd McNett
Sue Mehler
Bill and Sandra Mersereau
Anne and Jack Middleton
Gary and Betty Miles
Linda Miller
Mark and Alison Miller
Susan and Fred F. Miller
Timothy Miller and Heidi Zeretzke
Pat Milliren and Alan Comulada
Darlene Mindrum
Sharon Minor
Gene Mizell
Judith Moore
Maggie Murphy and John Dlouhy
Kathy and Mike Murray
Margaret Neudorfer
George and Mary Jo Newbury

North American Wetlands Conservation Act
Nysether Family Foundation
Colette Ogle
Therese S. Ogle
Charles and Elizabeth O’Hara
Mike and Bonnie Olpin
Randi and Neal Olson
Simon and Carol Ottenberg
Molly and Bob Pavia
Mark Pearson
Sina Pearson
Charles and Marnie Pennington
Lola Peters
Dena Petersen and Ann Buzaitis
Justin and Bridget Phraner
Sandy Pitler and Constance Parsons
Dennis and Lori Pollett
Lawrence Powelson and Wallis Bolz
Terry Purdy and Melinda Cumming
Hildegard and Jeffrey Radke
Maureen Ratfield

continues on the next page...

Ann Reid and Tom Theisen
Peter Remick and Sandra Krot
Ted and Doris Rempel
Rob Richey and Jeanne Brovold
Howard Robbins
Betty Rockwell
Colleen Rohrbaugh
Hal and Susan Rooks
Harriet Rooks
Paul Rosasco and Winni McNamara
Rose Foundation
Rebecca Rosencrans
Barbara Sacksteder
Samish Island Community Center
Rick and Cynthia Sapp
Paul Scharping
Jim and Levy Scheltens
Peter Schmitz and Mary Richter
Barbara Schoener
Marlene and Mark Schuck



Wetlands in the forested upper portion of the property.

“Generations of Islanders and visitors have traveled through the property and felt a sense of place and history,” says steering committee member Mark Hitchcock. “Older forests like these are disappearing. These older forests next to tidelands and bays, are why we are so lucky to hear Great Horned Owls at night and see herons fishing during the day. Herring, crab and juvenile Chinook Salmon rely on the bay’s eelgrass beds, and that in turn may help our resident Orcas. I am so pleased we joined together with the Trust as a community, to conserve this land.”

For more information about Samish Flower Farm, visit www.skagitlandtrust.org.

Skagit Land Trust is now working on a stewardship management plan for the property. This plan will lay out a vision for the land and steps to get there. It will address items such as wetland restoration, invasive species control, and public access. During the campaign we heard from donors that protecting the unique wildlife habitat and forest on the property was a priority. The community was also excited to see appropriately-sited trails. Currently the trail to the beach is open for foot traffic.

The Trust will host a **meeting on July 14th from 1:30-3:00pm at the Samish Island Community Center** to gather public input for the Samish Flower Farm management plan. We want to hear thoughts on possible trail locations, a place to park cars or bikes, and how to help the property flourish as a wildlife sanctuary. We hope you can join us.

Stewardship work has already begun and we are grateful to all of the volunteers who have come out to pull ivy and other invasive plants. **We have another work party planned for the morning of our community meeting, July 14th from 10am-1pm.** If you haven’t had a chance to visit the property yet, this will be a great opportunity to see the work being done.

As with all of our properties, the Samish Flower Farm needs volunteer land stewards and land steward aides. These people are trained and assigned to monitor the property and undertake special tasks. **If you are interested in being a land steward or aide, contact volunteer@skagitlandtrust.org.**

The Trust is also looking for volunteers to help with “baseline inventory” for the Samish Flower Farm, documenting birds, insects, plants, and other natural aspects of the property as well as its history. We will have more information about this program at the July 14th meeting.

Thank you to all of the donors who helped save the Samish Flower Farm

Charles Schultz and Terri Bakke-Schultz
David and Jean Schy
David and Eddylee Scott
Rosemary Seifried
Al Seitz
Jerry Sells and Linda Larson
Susan Sentner
Bruce and Teresa Sharpe
Sally Sheck
Robert and Myrna Sherman
Steven Siegfried
Skagit Community Foundation
Gail Smith and Frances Chalmers
Robert Smith
Fred and Bev Soler
Springbrook Farms
Nurith St Pierre

Sarah Stapleton
Christopher and Jackie Stewart
Daniel and Louise Stewart
Bob and Debbie Stilnovich
Richard and Daphne Storwick
Linda Strachan
David Strong
Richard Studebaker & Eileen Anderson
Kate Szurek
Linda and Charles Talman
Ann Tanner
Alex and Jean Taylor
Susanne Taylor
Bill and Joan Tezak
Ron and Nada Thompson
David and Christine Towne
Helen and Jan Van Lohuizen

Rick and Shelley Van Pelt
Andrew Vanderhoof
Phil VanderZee
Jane Vincent and Erik Hulsey
George and Laura Jane Viverette
Gregg and Erin von Fempé
Lea von Pressentin
Jim and Betsy Walker
Kristine Wallen
Dederick Ward & Susan Parke
Pat and Strand Wedul
MerriLou and Lyle Wesen
Ron and Jan Wesen
Steve and Kathryn White
Jerry and Carol Whitfield
Wiggin, Cheryl and Terry
Barbara Williams

Christa and John Williams
Cheryl Willis
Susan Wilson and Eric Hall
Ken and Anne Winkes
Catherine Winters
Annette Woolsey & Jim Shiflett
Laura Wright
Nora Wright
Brent and Rebekah Young
Danielle and Mark Young
David and Pat Young
Jim and Kay Zielinski
Gloria Zillig
Jane Zillig and Paul Ingalls
Barbara Zimmerman
Gerald and Mary Zyskowski
Stan Zyskowski

In Honor and Memorial Gifts (April 1, 2018- June 12, 2019)

In memory of Diane Altwein

Ramona Hammerly

In memory of Tom Andrak

MJ Andrak

In memory of Dorothy Asa

Peggy Ratermann

In Memory of Sophie and Barney

Anne Braaten

In memory of Bob Bell

Pat Bell

In memory of Granny & Pop Bernhard

Fred and Bev Soler

In memory of Jonathan Bjorklund

Cindy Bjorklund

In honor of Ellen Blair

David Blair

In memory of Ric Boge

Kari Boge

Janet Boge

In memory of Ben & Elsie Bourns

Robert and Victoria Bourns

In honor of Heather Bourns &

In memory of Doris Green

Brenda Bourns

In memory of Jack Bowman

Nadene Frazier-Westphall

In memory of Robert A. Bradley

Richard and Tacy Bensiak

Richard and Pat Bradley

Allan and Eden Johnson

Mary Suppiger

Diane and John Wallace

In honor of Victoria and Jim Brown

John and Linda Hunt

In memory of Elizabeth Burdock

Joseph Burdock

In memory of Abby Miller Busche

Susan and Fred F. Miller

In memory of Jim Caudill

Mary Lou Caudill

In memory of David M. Chaplin

Dawn Chaplin

In memory of Lois and Cleve Chase

Rebecca Cannon

In honor of Sarah Christensen

Sina Pearson

In memory of Harold Christenson

Karen and Doug Radcliffe

In memory of Doris C. Cohan

Molly Cohan

In honor of Alice Collingwood

Trish Johnson

In memory of John and Ellen Conlee

Gerri and John Gunn

In memory of Lorry D'Arienzo

Larry D'Arienzo

In memory of Chuck Davis

John Buchanan

Marlene and Mark Schuck

In memory of Bruce Daniel

Carol Bloom

Malcolm Daniel and Darryl Morrison

Marcia Daniel

Friday Literature Group and Arline Nitzberg

Gail Lipsitz

Cherie and Kerry Stewart

In memory of Bobbi Day

Diane and Martin Lind

In honor of Molly Doran

Dena Petersen and Ann Buzaitis

In memory of Frank & Ronnie Downen

Marilyn Gardner

In memory of Ben and Lois Englebright

Larry and Alba Stevens

TJ Stevens and Todd Rubano

Annette Woolsey and Jim Shiflett

In memory of David Farrow

Christine Farrow

In memory of Cecelia Fiamengo

Dennis and Lori Pollett

In honor of Fisher and Amaya

Shasserre Family Fund

In Memory of Rita and Don Fisher

David and Joanne Witiak

In memory of Marian Fletcher

Marna Fletcher and Jeff Berger

In memory of J.D. and Margaret Fouts

Susan Sentner

In honor of Mary Ann Funk

Carl and Mara Funk

In honor of Elizabeth and Ethan Goldberg

John and Linda Hunt

In memory of Margaret Rose Grundy

Staff Of Skagit Wild Bird Supply

In memory of Richard Hallingstad

Vicki Hallingstad

In memory of Dave Hansen

Fran Hansen

In honor of Kit and Carol Harma

Miriam Lambert

In memory of Sue Ellen Heflin

Ann Reid and Tom Theisen

In honor of Ruth Heft

Paul Blum and Alison Zak

In memory of Ralph Heft

Mike and Teresa Schmoie

Glenn and Teddie Bordner

In memory of Woody & Gladys Hopley

and Bill & Mary Hopley

Bill and Sharyn Hopley

In honor of John and Linda Hunt

James Hunt

Martha Wilson

Carrie Zerjav and Nathan Moore

In honor of Marcia Hunt & Steve Hulsey

James Hunt

Martha Wilson

Carrie Zerjav and Nathan Moore

In memory of Clayton James

Sarah and Robert Christensen

In honor of Peter Jepson & Diane Bednarz

Dena Petersen and Ann Buzaitis

In honor of A. Elliott Johnson

A. Elliott Johnson Children's Trust

Margaret Neudorfer

Nancy Sayer

In memory of Paul D. Johnson MD

Kim Kusick

In memory of Roger G. Kelley

Darlene Mindrum

In honor of Kellie Kerr

Chinnaya Parimi

In honor of Alyse & Sam Kwant's wedding

Frieda Cohan

In Memory of Art Larvie

Liz McNett Crowl and Todd McNett

In memory of Bob Leatherwood

Anonymous

In memory of Dick Leidholm

Cathy Funk

In memory of Vaughn & Helen Lockwood

Frank and Donna Leonetti

In honor of Doug and Laurie Lundgren

Gordon Harrington

In honor of Joan and Keith Magee

Joseph Magee

In honor of Robln Mari

Ms McBride

In memory of Donna Mae Matthews

Leah Keefer & Owen Ward

In memory of Roland Matthews

Linda Ballantine

In honor of Phil and Anne McCracken

Melita and Peter Townsend

In memory of the McCullough Family

Mary Kae McCullough

In memory of Dale Middleton

Anne and Jack Middleton

In memory of Mike Minor

Sharon Minor

In memory of James C. Mizell

Barbara Lemanski

Andrew Vanderhoof

Catherine Winters

In memory of Gene Murphy

Ginny Murphy

In honor of John Murphy

Lola Peters

In honor of Therese Ogle

Colette Ogle

In memory of Richard Pagh

Sally Pagh

In memory of Esther Pearson

& Elizabeth Hedlin

Sina Pearson

In memory of Mollie and Lou Pepper

Margy Pepper

In memory of J. Raoul St. Pierre MD

Charles and Elizabeth O'Hara

Nurith St Pierre

In memory of Norm Prewitt

Bob and Connie Snell

In memory of Allie Quinn

Frances Ambrose and Steve Hunter

In memory of Dale & Almeda Ragan

Patricia Lundgren

In memory of Bob Ratfield

Gail Corbin

In memory of Nathan Rawhouser

Ashley Rawhouser

In memory of Kit Rawson

Susan Bishop

Kathy Thornburgh

Karen and Jim Vedder

In memory of the Richdale Family

Barbara Schoener

In memory of Danne Riggins

Vernon and Nancy Blue

Billye Force

Joan Williams

Janice and M Wills

In honor of Lenore Robb

Janice Place

In memory of Lynn Donnelly Rodgers

Tress Connolly

In honor of Donald Rooks

Hal and Susan Rooks

In honor of Heidi Rooks

Hal and Susan Rooks

In memory of Jack Ross

Jerry Ross

In honor of Samish Island Firefighter's Assoc.

Mike and Cindy Collins

In honor of the Samish Island Community

Maggie Murphy and John Dlouhy

In memory of Roz Sealy

Beth Carlyle-Askew

In honor of J. Bruce Smith

Sandra Tassel and Craig Lee

In memory of Stephenie Stevens

Steve and Kathryn White

In memory of Richard Stewart

Peter Remick and Sandra Krot

In memory of William & Mary Stewart

Christopher and Jackie Stewart

Daniel and Louise Stewart

In honor of Julia & Michael Stewart

Daniel and Louise Stewart

In memory of R V Stewart & John Pilik Families

Robert and Janice Dionne

In memory of Adrian Strong & late members

of the Harmonica Windjammers Band

David Strong

In Honor and Memorial Gifts cont.

In memory of Jason Aaron Swanson

Lisa Swan

In honor of David Swayne

Andrew Swayne

In memory of James Taylor

Susanne Taylor

In memory of June Thomas

Cecil Thomas

In memory of Richard Tjersland

Shirley Tjersland

In memory of Tommy the Sparrow

Susan Ehler

In memory of Arthur H. Towne

David and Christine Towne

In memory of John Tursi

Suzette Richards

In memory of Joan L. Vanderhoof

Andrew Vanderhoof
Catherine Winters

In memory of Ed & Bessie von Pressentin

Lea von Pressentin

In honor of Keith and Jan Wiggers

Robert and Judith Higgins

In memory of Jess & Maude Willard

Margaret Neudorfer

In honor of Sloan & Ben Winkes and Family

Alan Breen

In honor of Ken & Anne Winkes

Gus Winkes
Mary Winkes

In honor of Aba Winkes

Ben and Sloane Winkes

In memory of Tom Winn

Tim Hyatt
Mike and Tammy Lawler

In honor of Susan Wood

Annette Woolsey and Jim Shiflett

In memory of Jim & Merline Wright

Laura Wright

In memory of Matt Zillig

Marisue Zillig

Current Business Supporters

5b's Bakery
A Town Bistro
Ace Hardware
ACT Theatre
Adaptive Law Firm PS
Adara Salon
Adrift Restaurant
Aleutian Boat Works
Allstate Insurance
Amaryllis
Anacortes Brewery
Anacortes Cinemas
Anacortes Community Theater
Anacortes Diving
Anacortes Oil & Vinegar
Anacortes Telescope & Wild Bird
Anelia's Kitchen
Anne Martin McCool Gallery
Anthony's Restaurants
Arbor Pacific Forestry Services, Inc
Armadillo Insight LLC
Arne Svendsen Trucking Inc
Artist Boat
Avalon Links
Azusa Farm Garden
Baird Financial
Bank Of The Pacific
Barnard Griffin
BIKESPOT
Birdsview Brewing Company
Bistro San Martin
Bitters Company
Blue Heron Coffee
Blue Heron Farm
Boulevard Seafood
Bow Edison Fine Food & Drink
Bow Hill Blueberries
Breadfarm
Brown Lantern Alehouse
Budget Towing and Auto Repair
Burlington Freeway Storage
Cairnsprings Mill
Calico Cupboard - Anacortes
Calico Cupboard Cafe
Campfire Samish
Caravan Gallery
Carpenter Creek Farm
Cascadian Home Farm
Cedar Realty
Charlton Glassworks
Chateau Ste. Michelle
Chimpanzee Sanctuary Northwest
Christianson's Nursery, LTD
Chuckanut Brewery
Chuckanut Lighting
Chuckanut Manor Seafood and Grill
Chuckanut Valley Vet Clinic
Ciao Thyme
Cline Consulting, LLC
COA Mount Vernon
Coastal Farm and Ranch
COHO Liquidation
Commonwealth Financial Network
Community Of Christ In The Greater PacNW Mission
Center Membership
Compass Wines

Conway Muse
Cottons
Craft Stove
Cunningham, Carole
Currier, Alfred and Anne Schreivogl
Dad's Diner
Dakota Art Store
Deception Distilling, LLC
Disneyland Resort
E and E Lumber, Inc
Easton's Books
Eco-Restore Ecological Consulting
Eddyline Kayaks
EISage Designs
Embellish
Empire Alehouse
Empirical Wealth Management
Everett Aqua Sox
Everett Silvertips
Fairhaven Runners & Walkers
Farmstrong Brewing Co.
Fidalgo Artisan Yarn Company
Fidalgo Bay Resort
Field Of Beans Cafe
Fine Feathered Friends
Finn River Farm and Cidery
Foothills Toyota
Forte Artisan Chocolates
Fred Meyer Community Rewards
Frida's Gourmet Mexican
Frontier Building Supply
Gail Harker Center For Creative Arts
Galveston Historical Foundation
Gere-a-Deli
Good Earth Massage
Google
Graham Schodda
Grandy Lakes Forest Associates
Guardian Northwest Title & Escrow
Guemes Island Resort
Haggen Food & Pharmacy
Handmade La Conner
Hedgerow
Hedlin Farms
Hellams Vineyard
Heritage Flight Museum
High Rock Fisheries
Holland America Line
Island Adventures
Island Express Charters
J P Automotive
John L Scott - Anacortes
Johnny Picasso's
Jo's Healing Hands
Jumbled Pie
Kaptein's Ace Hardware
Karl's Paints
Kelley's BBQ
King Arthur Flour
Klepper Glass
Kulshan Brewery
La Conner Channel Lodge
La Conner Thai Garden
La Terrazza
Lam's Seafood
Land Title and Escrow

Lang's Horse and Pony Farm
Lautenbach Industries
Lefebber Turf Farm
Les Femmes
Les Schwab Tire Burlington
Libby Makes
Lichenology
Lincoln Theatre
Lisser & Associates
Lithtex NW
Lorenzos Mexican Restaurant
Lost In The Groove
Lost River Winery
Lowell Garden Design
Lummi Island Heritage Trust
Majestic Inn and Spa
Make It Matter LLC
Mariposa
Maryhill Winery
Max Dale's Steak & Chop House
McIntyre Hall
McMenamins
Mexico Cafe
Miles Sand & Gravel Company
Miller Consulting
Mount Baker Theatre
Mount Vernon Red Apple
Mr. T's Awards & Embroidery
Museum Of History & Industry
Museum Of Northwest Art
Native Springs
Natural Ceramic Vision
Nell Thorn Waterfront Bistro & Pub
Nordic Museum
North Cascades Institute
North Star Diner
Northwest Brewers Supply
Northwest Fine Furnishing
Northwest Real Estate Valuation
Oliver-Hammer Clothes Shop Inc
Oxbow Farm & Conservation Center
Pacific Cascade Services LLC
Pacific Northwest Ballet
Pacific Rim Marine Surveyors
Pacific Science Center
Panama Hotel
Pasek Cellars
Patagonia Legacy
PAVE Jewelry & Design Studio
Pelindaba Lavender
Penguin Coffee
Per Dona Salon and Spa
Perennial Pleasures
Porterhouse Pub
Powell Studios
Puget Sound Energy
Razzi's Pizzeria
Rexville Grocery
Rick Steves
Ristretto Coffee Lounge & Wine Bar
Riversong Farm
Ryann Michele & Company
Samish Island Cards
San Juan Preservation Trust
Santo Coyote

Sauk Mountain Pottery
Schuh Farms
Scott Milo Gallery
SeaBear Smokehouse
Seaport Books
Seattle Aquarium
Seattle Arts & Lectures
Seattle Mariners
Seattle Sounders FC
Sedron Technologies
Semiahmoo Resort
Sempre Italiano
Shambala Bakery
Sheely's Floral Gift
Shell Puget Sound Refinery
Shelterbelt LLC
Sierra Pacific Industries
Silver Reef Casino
Skagit Conservation District
Skagit County PUD
Skagit Crest Vineyard & Winery
Skagit Cycle Center
Skagit Gardens
Skagit Law Group PLLC
Skagit Maid Creamery
Skagit River Brewery
Skagit River Steel and Recycling, Inc.
Skagit Symphony
Skagit Valley Family YMCA
Skagit Valley Food Co-op
Skagit Valley Gardens
Skagit Valley Healing Arts
Skagit Wild Bird Supply
Smiley Insurance Services
Smith and Vallee
Soothing Waters
Sound Cedar Lumber
Springbrook Farms
Step Outside Shoes and Accessories
Still Life With Cat Studio
Stomping Grounds
Stowe's Shoes and Clothing
Stratum Group
Strauss Jewelers
Sunland Bark & Topsoil
Swinomish Casino and Lodge
Taproot Theatre Company
Taylor Shellfish Farms
Terre-Source LLC
Terry MacDonald Art
The 5th Avenue Theatre
The Cottage Salon
The Country Lady
The Farmhouse Restaurant
The Good Stuff Arts
The Language Exchange, Inc.
The Museum Of Flight
The Nature Conservancy
The Scone Lady Bakery
The Scott Collection, Inc.
The Stall
The Willows Inn
The Wood Merchant
Theater Arts Guild
Train Wreck Bar and Grill
Tri Dee Arts

Tweets
 Union Tavern
 Valley Shine Distillery
 Viva Farms
 Washington Bulb Corp
 Watermark Book Co
 Westar Solutions
 Westside Tire Center
 Wiggins Nursery Co.
 Wild Fibers
 William Bounds Custom Framing
 Wilson Picture Framing
 Windermere Real Estate - Skagit Valley
 Wing Luke Museum
 Winthrop Mtn View Chalets
 Woodhouse Wine Estates
 Woodland Park Zoo
 Work Outfitters
 WSU Bread Lab
 Your Golden Rose Healing
 Zeeks Pizza

Grants, Foundation, & Nonprofits
 A. Elliott Johnson Children's Trust
 AmeriCorp
 Cascade Natural Gas ECO Fund
 City of Anacortes
 Conservation Reserve Enhancement Program
 Community Of Christ - Samish Island
 Congregation, Campground & Retreat Center
 Ducks Unlimited
 Emerson High School
 Evergreen Islands
 Fidalgo Fly Fishers
 Friends Of the Forest
 Groundfloor Guemes
 Guemes Island Community Center Association
 Guemes Island Community Church
 Guemes Island Ferry Trail
 Harrington Schiff Foundation
 Hugh and Jane Ferguson Foundation
 Jeffris Wood Fund
 Museum Of Northwest Art
 Norcliffe Foundation

North Cascades Institute
 Northwest Straits Foundation
 Nysether Family Foundation
 PEO Sisterhood 91 Chapter W
 Rose Foundation for Communities and the Environment
 Samish Indian Nation
 Samish Island Community Center
 Satterberg Foundation
 Seattle City Light
 Skagit Audubon Society
 Skagit Community Foundation
 Skagit Conservation District
 Skagit County Boys & Girls Club
 Skagit County Natural Resources Dept.
 Skagit County Parks & Recreation
 Skagit Fisheries Enhancement Group
 Skagit River System Cooperative
 Skagit Soil & Water Conservation District
 Stillaguamish Tribe
 Swinomish Indian Tribal Community
 Temcov Foundation

The Burning Foundation
 The Conservation Fund
 The Nature Conservancy, WA
 Tulalip Tribes Charitable Contributions
 Upper Skagit Indian Tribe
 U.S. Forest Service
 U.S Fish & Wildlife Service (NAWCA Grant)
 WA State Department of Ecology (NEP)
 WA State ESRP & Salmon Recovery Funding Board
 WA State Fish & Wildlife (ALFA)
 WA State Department of Natural Resources

Employee Matching Gifts

Amazon Smile Foundation
 Bill and Melinda Gates Foundation
 Boeing Gift Matching Program
 Conga AppExtremes, LLC
 General Mills Employee Match Program
 Microsoft Matching
 Puget Sound Energy Foundation
 Shell Oil Company Foundation Matching Gifts
 Symetra Financial Corporation

Current Individual Members

Every effort was made to ensure all members are listed correctly. If you discover any errors, please accept our apologies and contact us so that we can make a correction. Members with an asterisk next to their name have passed away this year. We miss them and will always be grateful for all they did for Skagit Land Trust.

Members who also gave an in-kind donation are noted with the following symbol.



Members who make a recurring gift as a Skagit Sustainer are noted with the following symbol.



Members who are part of the Cedar Legacy Circle are noted with the following symbol.



Joanne Abelson & Chris Goelz
 Ruth Adamitz
 Brian Adams & Kecia Fox
 David Adams & Greta Movassaghi
 Don & Sue Adams
 Evelyn Adams
 Kathleen & Thor Albro
 Debbie Aldrich
 Kathryn Alexandra
 Gail Allen
 Jeffrey & Linda May Allen
 Daniel Allison
 Glenda Alm & Richard Kent
 Frances Ambrose & Steve Hunter
 Jim & Joyce Anderson
 Robert Anderson
 Elaine & J. Winston Anderson
 MJ Andruk
 Jean & Bret Andrich
 Mark & Bonnie Antoncich
 Bobbie Apel
 Aubrey Aramaki
 Howard & Thais Armstrong
 Sandra & Larry Ashby
 Joan & Monte Asken
 M Audette
 Ray & Katie Avery
 Mark & Ruth Backlund
 Mark & Karen Backman
 David Baer
 Janet Bailey
 Jenny Baker
 Judy Baker
 Meredith Baker
 Caroline & Brian Baldie
 Richard Baldwin
 Linda Ballantine
 Eric & Amanda Baltazar
 Judy & Peter Bangs
 Barbara Banks
 Dena & Frank Barcott
 Marjorie Barden & Ed Hill
 Phoebe Barnard & John Bowey
 Dennis & Chris Barnes
 Sharylee Barnes
 Anne & Bob Barry
 Liz & Michael Bart
 Diana & Sean Bartlett
 Beth Basabe
 Anne Basye
 Helen Baumgartner
 Sharon Beach
 Deb Bear
 Paul Beaudet & David Wertheimer
 Jacqui Beck
 Diane Bednarz & Peter Jepson
 Lynn Beebe

Fred & Eva Beeks
 Thomas & Nola Beeler
 Allison Beezer & Mary Kudla
 Pat Bell
 Richard & Tacy Bensiak
 Ken Berg & Jan Weydemeyer
 Al & Sue Berger
 Richard Bergner
 Linda & Victor Bertucci
 Joline & Frank Bettendorf
 Coizie & Dicken Bettinger
 Robert & Catherine Betz
 Elena Bianco
 Marjorie Bickel
 Jane Billingham & Thomas Lebovsky
 Jim & Jean Birdsall
 Greg & Sue Bishop
 Sarah Bishop & John Mailhiot
 Susan Bishop
 Peggy Bissell & Jon Mills
 Cindy Bjorklund
 Franklin E Bjorseth
 Claude & Annie Blackburn
 David Blair
 Ellen Blair
 Cathryn & Graeme Blake
 Rich & Feryll Blanc
 Gary & Heidi Bletsch
 Robert & Marie Blits
 Carol Bloom
 Elizabeth Blosten & Tom Linder
 Vernon & Nancy Blue
 Steven & Kathryn Bluhm
 Paul Blum & Alison Zak
 Ann Bodle-Nash & Rick Nash
 Sandra Boeskov
 Janet Boge
 Kari Boge
 John & Gail Boggs
 Tim & Liz Bohlin
 Ros Bond & Jill Marsden
 Bonnie McFarland & Denny Organ
 Glenn & Teddie Bordner
 Jackie Boss
 Meg Bossie
 Bob & Nina Boudinot
 Brenda Bourns
 Heather & Barney Bourns
 Robert & Victoria Bourns
 Jennifer Bowman
 Jon & Ann Bowman
 Judy Bown
 John & Kristen Boyes
 Anne Braaten
 Richard & Pat Bradley
 Dorothy Bradshaw
 Lucy Bradshaw

Mary Brady & Don Power
 Jane Brandt
 Dan & Donna Brauer
 Mariepaule Braule
 Kalman Brauner & Amy Carlson
 Phyllis Bravinder
 Martha Bray & John Day
 Laura Breckenridge
 Heidi & Dale Brewer-Peters
 Peggy Bridgman
 Rose & John Brierley
 Estate of James & Gyvonne Britten
 Richard Brocksmit & Eleven Vexler
 Jodi Broughton
 Paul & Mary Brower
 Christopher Brown
 Gary & Susan Brown
 Jeff Brown & Margaret Catzen-Brown
 Linda & Steve Brown
 Lloyd & Wendy Brown
 Michael C. Brown & Michelle McEachern
 Rebecca Brown
 Richard & Jean Brown
 Rod & Barbara Brown
 Stephen & Velda Brown
 Cath Brunner & Eric Riedel
 Dietrich & Anne Brunner
 Paulette Brunner
 Joe Bucek & Mary Heath
 Janice & Kurt Buchanan
 John Buchanan
 John Buchanan
 Matthew Buckner
 Nathan Buckner
 Karen Bunnay
 Robert Burden
 Joseph Burdock
 Mike & Diane Burkey
 Kelly Bush & Russ Dalton
 Connie Bush
 Ferdi Businger
 Joost A. Businger & Marianne Kooiman
 Richard Butler
 Suzanne Butler
 Coleman Byrnes
 Jerlyn Caba & Geoff Holmes
 Ann & Carl Cady
 Bonnie Campbell
 Rebecca Cannon
 Danielle Caramagna
 Bob Carey & Kari Odden
 Beth Carlyle-Askew
 BJ Carol
 Amy Carson
 Katherine Carson
 Janan & Alan Carter

Betty Carteret & Eric Shen
 Estate of Joan Casey
 Bea & Jim Cassetta
 Anne Casperson
 David & Janet Cater
 Mary Lou Caudill
 Dawn Chaplin
 Mark & Penny Chapman
 Anne Chase-Stapleton
 Julie Chatt Erickson
 Beth Chatt McGurran
 Louis Chernak
 Ann Childs & Stephen Thornton
 Sarah & Robert Christensen
 Jim Cieccko & Joanne Myers-Ciecko
 Bill & Edie Clark
 Robert & Shirley Clark
 Steve Clarke & Stella Spring
 Dionne & Richard Clasen
 Eileen Coan & Ross McConahey
 Dennis & Carolyn Coble
 Robert Coffey & Deborah North
 Frieda Cohan
 Molly Cohan
 Asher & Cindy Cohen
 Morty Cohen & Kathryn Cavit
 Alice Collingwood
 Hannah Colton
 Kathy Colton
 Tim & Kirsten Colton
 Marc Coltrera & Anne Buchinski
 Tress Connolly
 Gerry Cook & Hannah Sullivan
 Bob & Ann Corbett
 Gail Corbin
 Landry & Susan Corkery
 Debbie & Darrell Cornelius
 Nancy Cornell
 Olivia & Jim Cornwall
 Barbara Courtney
 Mick Cowles & Patty Munday
 Allen Craney
 Mike & Dianne Crawford
 Janet Cray
 Susan & Gordon Crippen
 Joan Cross
 Nancy Crowell
 Shawn Crowley & Karen Petersen
 Laurette Culbert
 Norman Culbert
 Naomi & Robert Cummings
 Hannah Currie
 Alfred Currier & Anne Schreivogl
 Jocelyn Curry
 Nancy Lazara Cushing
 Stacy & King Dahl
 Lee & Mary Sue Dallas

Chris Damarjian
 Mel & Susan Damski
 Malcolm Daniel & Darryl Morrison
 Marcia Daniel
 Nora Daniel
 Lauren Danner
 Larry D'Arienzo
 Virginia Darvill
 Doug Davidson & Lynne Wenberg-Davidson
 Guy Davidson
 Jan Davis
 Julie Davis
 Karen & Richard Davis
 Homer & Rosette Dawson
 Nancy & Stephen Dean
 Jerry & Ellen DeBacker
 Cheryl Decker
 Daniel and Charlotte Decker
 Linda & Scott DeGraw
 Hollie & Adam Del Vecchio
 Pat & Dick Delachapelle
 Pete Delachapelle
 Gene & Marilyn Derig
 Karen Desko
 Bobbi & Thomas Deutsch
 Alice & Pete Dewell
 Beth Dewey
 Bill & Joyce Dewey
 Rosalie Dick
 Mary & Robert Dickinson
 Bill & Holly Dietrich
 Randall Dills
 Paul Dinnel & Vicki McNeil
 Robert & Janice Dionne
 Lani Dodge
 Christina Donahue*
 Lani Donohoe & Tom Griffin
 Lizzy Donovan
 Martha & Jim Donovan
 Molly Doran & Andrew Cline
 John Douglass & Janet Chappell
 Ronald Dow
 Emily Downing & Jason Ferleman
 Maggie & George Downing
 Alec Downs
 Fonda & Ron Downs
 Peggy & John Doyle
 Dr. Dennis Edmonds & Dianne Goddard
 Julie Drake
 Eileen Drath
 Martin & Jessica Dubek
 Steven Dubnoff
 Judith Dudley & Tom Slocum
 David & Clara Duff
 James & Reva Dugan

Individual Members cont.

William Dunlap & Ellen Rak
Margaret Dunnington
Ann Dursch
Larry & Molly Dutton
Katrine Eagling
Michael & Katherine Earley **SS**
William Easton & Tomas Ramirez
James Eberhardt **A**
Rob & Deb Eckley
Ralph Edfeldt & Bonnie Steussy
John Edison
Craig & Noma Edwards
Larry & Pat Edwards
Susan Ehler
Karen Eichler
Diane Eiesland
Mark Eikeland
Keith Eilers
Jerry & Marilyn Eisner **IK**
Carol & Jon Engels
Bob Englund
Walt Enquist
Debbie Ensey **IK**
Bruce & Cathy Entrikin
Bill & Susanna Epler
John & Marie Erbstoesz **IK**
Cory & Naomi Ertel
Britta Eschete **IK**
Roger & Leslie Estep **A**
Marc & Pam Estvold
Karen & William Everett **IK**
Susan Everett
Doug & Cheryl Everhart
Dwayne Faber
Anna Fahey & Gustav Moore
Nick Fahey & Deborah Martin
Jennifer Faley
Lauren & Michael Farley
Judy Farrar & Eric Knudsen
Christine Farrow
Robert Feist
Ron Feld & Lorna Klemanski **IK A**
Kurt & Sally Feldman
Doriss Fennell
Corwin Fergus
Jean Fike & Sandy Nunn
Liz Findley & John Meier
Mike & Kim Finger
Gloria & H.F. Fish
Glen & Martha Fishel
Judy Fisher **IK A**
Nancy Fisher-Allison & Tony Allison
Bette Fitzgerald
Marna Fletcher & Jeff Berger
Kevin & Rebecca Fletcher-Tighe
Glyn & Linda Fleury
Lin Folsom
Hugh & Debbie Forbes
Billey Force
Larry & Susan Forsythe
Marcia Fort
Alix Foster & Rick Shorten
Art & Robyn Fournier **IK**
Jube & Tom Fouts
Nancy Fox & Nick Allison
Martha Frankel & Tom McFall **IK SS**
Nadene Frazier-Westphall
Alex Free
John Freeman
Lulu Freer
Bill & Arlene French
Friday Literature Group
Attn: Arline Nitzberg
James Fukuyama
Roger Fuller & Mary Silva
Carl & Mara Funk
Cathy Funk
Brad Furlong & Eileen Butler **IK**
Joe & Terri Gaffney
Gary & Denise Gaggens **IK**
Rudy & Dolores Gahler
Gretl Dupres Galgon
Ken & Joan Gard
Karen Gardiner & Philip Brown
Marilyn Gardner
Karla & Steve Garey
Gary & Kari Garrett
Carolyn & Ed Gastellum **IK**
Robert & Rebecca Gates

Robert & Ellen Gatton
Dianne Gaughan
Warren Gilbert
Linda Giles
Dave & Nancy Gillespie
Tim & Susan Gilmore
Charles Givens
James & Paula Glackin
Tom & Carol Godwin
Peter Goldfarb
J. Golding & P. K. Stewart
Herb & Theresa Goldston
Patsy Good
Kristine & Roger Goodan
Charles Grace
Marta Grace
Gay Graham
Jonathan & Heather Granger
David & Judy Granstrom
Ellen Gray
H. Albert Green
Holly & Kevin Green
Phil Green
Sooze & Ben Grossman
Gerri & John Gunn
Caitlin Guthrie
Susan Gwozt
Richard Gwozdz & Katrina Hanna
Pete Haase
James & Karen Hadman
Sheila Haegele
Betty Haldeman
David & Catherine Hall
David & Deborah Hall
Vicki Hallingstad
Jay Ham & Jan Hersey
Janet Hamilton **IK**
Ramona Hammerly
Ernie & Joan Handelmann
Daniel & William Hanesworth
Christina & Ken Hansen
Fran Hansen
Fred & Ellen Hanson
Jana & James Hanson **SS**
Joan & Rick Hanson **IK**
Thor Hanson
Mark & Rita Harbaugh
Mary Mae Hardt & Scott Andrews
Carol & Kit Harma
Kirsten Harma
Steph Harmon
Holly & Don Harper
Stephanie & Steve Harper
Marrietta & Pat Harrigan
Gordon Harrington
Louise Harris **IK**
Deryl Hart & Pascale Michel
Jack & Susannah Hartt
Judith Hartford
Liz Hartley
Jack & Susannah Hartt **IK**
Dyvon Havens
Jean Hawkins
Mari Hayman
Bill Hayton & Laurence McCulloch
Lief & Monica Hazelet
Bill Hebner & Lorna Leschner
Larry & Josie Hedgpeth **SS**
Peter Heffelfinger
Jean Hefflin
Ruth Heft **IK**
Ted & Carol Hegg
Darwin Helmuth
Jan Hemme
Estate of Anita Hendrickson
Jennifer Hendry
Helen Heneks
Bill & Susan Henry
Kate Tibbetts & Gary Henry
Jerry & Linda Henry
Alan & Ana Hergert
Craig & Emily Hetherington
Jenny Heutmaker
Robert & Judith Higgins
Jill & Robert Hill
John & Nancy Hinton
Mark & Alison Hitchcock **IK**
Bill Hlavacek & Gail Bohnhoff-
Hlavacek

Amy Hockaday
Fred Hodge **IK**
Ted & Beverly Hofer
Glen Hoff
Shirley Hoh
Sara Holahan
Scott & Britanny Holley
Joyce Hollywood
Cherie & Howard Holman
Doris Holmes **A**
Bill Hood
David Hoofnagle **SS**
Bill & Sharyn Hopley
Steve & Gail Hopley **IK**
Margaret Horak
Margi & Richard Houghton
Chuck Howell & Charlene Day **IK**
Pam & James Hoyle
Jack & Grace Hubbard
Kathy Huckleberry & Mike Burr **IK**
Gene & Bette Huff
Sharon Hughlitt
Garnett Hundley
James Hunt
John & Linda Hunt **IK SS A**
Marcia Hunt
Susan Hunt
Heather Huntington
Sarah Huntington
Julia & John Hurd
Nancy & Jerry Husted
Pattie Hutchins
Doug & Suzanne Huttenstine
Tim Hyatt
Sally Hyde
Dale Hylton
Jean & Brad Imus
Margarete & John Insull
Mario Irelan
Chris & Pam Irwin
Jim & Jan Irwin
Elizabeth A. & Michael Jackets
Sego Jackson & Raven Jirikovic
Wynndham & Tom Jackson
Steven & Dian Jahn **SS**
Beverly & Richard James
Lisa & Mike Janicki
Wes & Rose Jansen
Thomas & Ellen Jeffcott
Chip & Laurie Jenkins
Edward & Valerie Jensen
Ryan & Christina Jepperson **SS**
Jim & Mary Jessen
Larry Johanson
Allan & Eden Johnson
Georgia Johnson **IK**
Jim Johnson & Marilyn Kenney
Kirk Johnson & Lori Nordgulen
Martin & Anita Johnson
Ron & Patricia Johnson
Sharon Johnson
Steve & Robyn Johnson **IK**
Thomas & Lane Johnson
Trish Johnson
Helen Jones
Linda & Dennis Jones
Gordon & Barbara Jonsen
Lynne Jordan & Dennis Clark **IK A**
Martha Jordan **IK**
Patt & Neil Jorgensen **IK**
Kevin & Diana Judson
Clint Kahler
Rosemary & Keith Kaholokula
Marcia Kamin
Diane Kaplan
Patricia Karlberg **IK A**
Lynn Karns
Leah Keefer & Owen Ward **A**
Diane Keller
Ron & Jo Keller
Diane Kelso
Janene & Gerard Kenaston
Wendy & Hugh Kendrick
Matt & Bonnie Kerschbaum
Kathleen & Richard Ketcham
Terry Ketcham
Caleb Kidd
Nina Kidd
Jane Kiker

Marjorie Kilbreath & Dean Townsend
Kathy Kilcoyne & Jon Vanderheyden
Jim Killpack
Phil Kincare **SS**
Carol Kirby & Douglas Thompson
Michael Kirshenbaum
Lori Kirsis
Barbara & Gene Kiver
Greg & Marlene Kleven
Linda Knapp-Strobel
Joan Knowles & Howard Dawson
Bob Knowles **A**
Kristine Knutson
Kari & Daniel Knutson-Bradac
Marilyn Knutzen
Dick & Doris Kohler
Nagendra Kolluru
Julie & Steve Kongs
Germaine Kornegay
Linda Korten & Jim Burnison
Rae Kozloff
Beth Craig & Suzanne Klinger
Eric & Laura Kraig
Shelby Kremenich
Tom Kress & Anita Gras Bryant
Linda & Steve Krippner
Karen Krub
Robyn Kruse
Kathy Kuba **IK**
Von & Elizabeth Kuehn
Jim Kuhn & Claudia Ross-Kuhn **IK**
Anne & Bob Kuntz
Rusty Kuntze & Libby Mills **IK A**
Konrad & Herta Kurp
Christina & Michael Kurtz
Kim Kusick
Trevor & Delberta Kyle **A**
Frank Lacey & Jeroldine Hallberg
Jere LaFollette & Wende Sanderson
Nancy & Les Larsen
Robin LaRue
Mary & Mark Lascelles
Christine Lavra
Lawrence & Jean Lawless
Greg & Karen Laws
George Lawson **IK**
Marcia Lazoff
Chris & Jody Lease
George LeBlanc
Hella & Harold Lee **IK A**
John Lee
Joseph & Brynn Leighton
Barbara Lemanski
Larry & Donnette Lennox
Frank & Donna Leonetti
Luna Levine
Rick & Tracey Levine
Katherine Lewis & Steve Lospalluto **IK**
Karen Lewis-Hart & Derek Hart
Cort Liddell & Carolyn Sutton
Konrad Liegel
Nancy Liggett
Dennis Lind
Diana Lind
Diane & Martin Lind
Martin Lind **IK**
Bruce Lindsay
Mark & Kelly Linnemann **A**
Gail Lipsitz
Craig & Anita Little **SS**
Nancy Llewellyn
Barbara Lopuszynski
Susan & Robert Lord
Lowman House
Janet Lowry & Jim Kirk
George & Barbara Lund
Philo Lund
Doug & Laurie Lundgren **IK**
Patricia Lundgren
Esther Luttkhuizen & Brad Claypool **IK**
David & Deborah Lycette
Robert & Susan Lynch **IK**
Howard & Edith MacDonald
Beau MacGregor & Ryan Castle **A**
Mac & Linda MacGregor **IK**
Meredith & Rick Machin **A**

Maddy MacKenzie
Martha Macri & Judy Alexander
Mac Madenwald & Wendy Gray **IK**
Joseph Magee
Keith & Joan Magee
Ann Magnano & Sheri Boddy **A**
Father Paul Magnano
Donald & Mary Magness
Scott Magorien & Susan Hayton Magorien **IK**
Glen & Kathryn Mahan
Philip & Jennifer Maillet
Mary Maloney
Michael & Suellen Mancer
Tim Manns & Brenda Cunningham **IK A**
Robin Mari
Merry Maricich & Robert Gardner **IK**
Barbara Marie & Gary Johnson
Callie Martin
Daniel Martin & Patsy Botsford-Martin
Greg Martin
Janice Martin & Doug Robinson **IK**
Robert Martin
Teak & Anne Martin
Michael Martucci
Debi Mast **IK**
Holiday Matchett
Penelope Matthews
Jeff & Ann May
Renata & Darren Maybruck **SS**
Thomas Mayes & Tami Thomas
Ms McBride
John McCallum
Bill & Dana McCarthey
Carolyn McCarthy & Kent Chasson
Donna McCord **IK**
Gail & Michael McCormick
Jennifer McCoy
Philip & Anne McCracken
Mary Kae McCullough
Terence M. McDonald
Alec & Sandy McDougall
Morna McEachern & Grant Brockmeyer
William & Lisa McGaw
Lynda McGinnis
Tara McGown & Kevin Crozier
Cynthia McGuiness
Judy McHarg **IK**
Nan McKay
Phyllis & Donald McKeen
David & Kate McKibben
Janet McKinney
Phil & Susan McCloud **IK**
Ruth McNally
Dick & Bettie McNeely **A**
Liz McNett Crowl & Todd McNett **IK**
Robert & Helen McPeak
Lisa & Daniel McShane **IK**
George & Jodi Meekins **SS**
Sue Mehler
Robert & Barbara Meier
Richard Mellon
Ralph Mendershausen
Roger & Mary Ann Mercer
Bill & Sandra Mersereau
Gail Messett
Anita Meyer & Josh Greenberg
John Meyer
Anne & Jack Middleton
Judy & Gordi Middleton
Gary & Betty Miles **A**
Curtis Miller & Shirley Solomon **IK**
Janet Miller
Linda Miller
Lisa Miller **IK**
Maggie Miller & Larry Stiles
Mark & Alison Miller
Norma Miller & Erik Christianson
Susan & Fred F. Miller
Timothy Miller & Heidi Zeretzke
Pat Milliren & Alan Comulada
Doug Mills & Beverly Faxon
Lynda Mills
John & Marge Milnor
Darlene Mindrum
Sharon Minor
Gene Mizell
Kris Ekstrand Molesworth & Carl Molesworth **IK**
Kelly Moloney
Dawn & Jim Moore

Erin Moore & Fritz Stahr
Judith Moore
Marlene & Jim Moore
Janet Morgan **IK** **A**
Jazz Morgan **IK**
Julie Morgan
Kyle Morgan
Todd & Laurie Morgan
Brent & Jenni Morrison
Orville & Carol Morrow
Douglas Moser & Paula Tsitsiragos
Bev & Jim Mowrer
Joseph Mulcahy & Anthony Young
Ginny Murphy
Maggie Murphy & John Dlouhy
Pamela Murphy
Bob & Deanna Murray
Diane Lee Murray
Kathy & Mike Murray
Lynne Myall
Richard & Gina Myers
John Narver
Ann Naymie
Dianne & Douglas Neilson
Richard & Linda Nelson
Margaret Neudorfer
Jon New & Diana Jordan-New
Edward K. Newbold
George & Mary Jo Newbury
Mark & Miriam Nihart
Mark & Gayle Nilson
Ann Noble
Debbie Nygren **IK**
Kenneth Oates
Kristjan & Monica Ochs
Joan O'Connell & Stephen LeCuyer
Jeanne O'Connor
Gordon & Joanne Odegaard
Dr. Alice Anne O'Donnell **IK**
Susan & Patrick O'Donnell
Colette Ogle
Therese S. Ogle **IK** **A**
Charles & Elizabeth O'Hara
Barbara Ohms
Lois Ohms
David & Sydney Olausen **IK**
Gabriel & Jeanne Olmsted
Mike & Bonnie Olpin
Darcia Olsen
Judy & David Olson
Randi & Neal Olson
Susan Oram
Anita Ordonez **IK**
Cathy Orlins
Virginia & Stephen Orsini
Leo Osborne & Jane Lane **IK**
Simon & Carol Ottenberg **IK**
Del & Debi Ottinger
Tracy & Ty Ouелlette
Beth Owens & Greg Roberts **IK**
James Owens
Robyn Owens
Sally Pagh
Lorna & Dennis Parent
Chinnaya Parimi
George Park
Mary Parker-Hale & Jeffrey Hale
Leslie Parks
Anne & Donald Passarelli **A**
Jim & Linda Patterson
Kevin Paul **IK**
Molly & Bob Pavia
Mark Pearson
Sina Pearson
Tim & Diana Pearson
Daniel Peek **SS**
Steve Pellegrin
Howard & Carol Pellett
Judy Penniman
Charles & Marnie Pennington **A**
Daniel Penttila
Margy Pepper
Sheila & Ronald Pera
Mark & Irene Perry
Lola Peters
Dena Petersen & Ann Buzaitis **A**
Paula Peterson
Sally Peyou
Walter & Cathy Pfahl **IK**
William & Sally Pfeifer **SS**

Justin & Bridget Phraner
Erica Pickett
Wilbur & Lisa Pierce
Erik Pihl
Julia Pingree
Larry & Claire Pinnow
Sandy Pitler & Constance Parsons
Frank Pitsch
Janice Place
Dennis & Lori Pollett
Susan & Jerry Posten
Rick Postera
Maggie Potter
Richelle Potter & Leo Kypuros **IK**
Lawrence Powelson & Wallis Bolz
Robert & Jacqueline Prescott
Lynn Prewitt
John & Joyce Price **IK**
Norma & David Priebe
Sheila & Roy Pringle
Pamela Pritzl
Terry Purdy & Melinda Cumming
Denny & Laurie Quirk **SS**
Karen & Doug Radcliffe
Hildegard & Jeffrey Radke
Amanda & Shane Rainwater
Bob & Judith Rainwater
Richard Raisler
Jim Ramaglia
James Randles & Melinda Brown Randles
Peggy Ratermann
Maureen Ratfield
Ashley Rawhouser **SS**
Constance Rawson
Kimberlee Ray
Robert Raymond & Dorothy Downes
Steffany Raynes & Lin Skavdahl **SS**
Graham & Margaret Read
Dick & Jeanette Redmond
Ann Reid & Tom Theisen **IK**
Lavone & Dick Reim
Kay Reinhardt & Jeronimo Squires
Peter Remick & Sandra Krot **SS**
Ted & Doris Rempel
Rep. Jeff Morris House of Representatives
Allen & Lisa Rhoades
Scott & Martha Rhodes
Sheila & Richard Rhodes
Suzette Richards **A**
Harold & Irene Richardson
Jack & Cynthia Richardson **IK**
Susan Richardson
Rob Richey & Jeanne Brovold
Rodger & LaRee Ricks
Nancy & David Ridgway
Roger Ridgway
Lucy Rigg McAdams
Danne Riggins*
Sally & Timothy Riordan
Douglas Risedorf
Christy & Scott Rittenhouse
Lenore Robb
Howard Robbins
Richard & Nancy Robblee
Susan Roberts & Joseph Miller
Virginia Roberts
Gary & Valerie Robinson **SS**
Betty Rockwell* **A**
David Rockwood
The Rodman Family
Jack Rodman
Kathy Rogers
Colleen Rohrbaugh
George Rolfe & Lois Gamble Duncan
Craig, Heather & Giovanni Romano **IK**
Susan Rombeek
Estate of Ellen Romick
Hal & Susan Rooks
Harriet Rooks
Bruce Rooney & Sandra Lane **SS**
Kathleen H. Root
Paul Rosasco & Winni McNamara
Bob Rose **SS**
John & Patty Rose
Valerie Rose **IK**
Rebecca Rosencrans
Andrew C. Ross & Laura Cailloux **SS**
Heidi Ross
Jerry Ross
Karen & Jeffrey Ross

Belinda Rotton **IK**
Rick & Bonnie Rule
Angie & Scott Rutherford
Connie Saari
Barbara Sacksteder
Rick & Cynthia Sapp
Herb & Christine Sargo
Betsy Sauther
Terre & Rick Scappini
Ted & Marsha Schad
Paul Scharging
Jim & Levy Schellens
Sharon Schlittenhard
Peter Schmitz & Mary Richter
Mike & Teresa Schmoie
Randolph & Barbara Schnabel
Scottie Schneider
Cathy Schoenberg **IK**
Barbara Schoener
Robert & Emma Schroder **SS** **A**
Marlene & Mark Schuck
Charles Schultz & Terri Bakke-Schultz
Luther & Maryam Schutz
Marcia Schwendiman
David & Jean Schy
David & Eddy Lee Scott
Rosemary Seifried
Al Seitz
Jerry Sells & Linda Larson
Dan Senour
Susan Sentner
Jennifer & Mike Sevigny **IK**
Norman Sevigny **IK**
Roupen & Shirley Shakarian
Howard & Kathy Shapiro
Bruce & Teresa Sharpe
Shasserre Family Fund
Sally Sheck
Elizabeth Sheppard & William D. Badgeley **SS**
Kim Sherman
Robert & Myrna Sherman
Nancy Shimeall
Sarah & Sylvia Sibley & Silas Banning
Mary Siegel
Steven Siegfried
Fred & Susan Sievers
Sue & Richard Sigmen
Gordon Sjogren
Sue Skillman & Phil Fenner **IK**
Ann Skinner
Robert Slack
Marlies & John Slostad **IK**
Terence & Lois Slostemaker
Ann Slutsky
Deborah Smeltzer & David Kingsbury **IK**
David & Kathleen Smith
Diane Smith **IK**
Gail Smith & Frances Chalmers
J. Allen Smith
Jay Smith & Susan Wood **SS**
John Smith & Cheryl Harrison
Krista Smith & Lisa Galloway
Nick Smith
Robert Smith
Pat Sneeringer
Bob & Connie Snell
Han So & Su'n Chon
Fred & Bev Soler
Brad Solomon
Mardi Solomon & Gene Myers
Mark & Cecilia Spahr
Linda Speck & Ken Willis
Cathi & Lawrence Spitsler
Gregory & Carol Springs
Nurith St Pierre
Jon & Vicky Stables
Staff Of Skagit Wild Bird Supply
Kimberley & Sherman Stanard
Dennis Stanchfield & Susan Radkins
Mary Stanton & Ken Smith
Dick Staples **SS**
Sarah Stapleton
Sharon Stapleton
James & Joline Stapp
Jennifer Stapp
John & Cristie Stapp
Lynn & David Stapp
Sally Stapp & Richard Brigham
Thomas & Christine Stapp
Charles Stavig

Pat Steffani
Irene & Shawn Steffens
Carol Steffy
Jack Stephens & Ellen O'Neill Stephens
Jane & John Stephens
Stu & Sally Stern
Gale Sterrett
Larry & Alba Stevens
Terry & Kathy Stevens
Cherie & Kerry Stewart
Christopher & Jackie Stewart
Daniel & Louise Stewart
Kate Stewart & Deborah DeWolfe
Margaret & Bob Stickrod
Bob & Debbie Stilnovich
Richard & Daphne Storwick
Jim & Cindy Straatman
Linda Strachan
Debra & John Strathman
Tom Strawman & Janet Nuetzmann
James & Mary Jo Stroh
David Strong
Don Stuart **IK**
Richard Studebaker & Eileen Anderson **IK**
Margaret Studer
Diane & Mark Studley
Carol Sullivan **IK**
Linda & Stephen Summers
Sharen Summers
Mary Suppiger
Patti Sutter & Jim Houston
Janet Sutton
Lisa Swan
Steve & Lucy Swartz
Andrew Swayne
Kate Szurek
Linda & Charles Talman **IK**
Robert & Sherry Tamone **SS**
Ann Tanner **IK**
Sandra Tassel & Craig Lee
Ann & Kevin Tate
Alex & Jean Taylor
Bill Taylor & Diana Lee
Carol Taylor & Thomas Carson **SS**
Dennis & Mary Ann Taylor **SS**
James Taylor
James & Megan Taylor
Margaret Taylor
Mary & Bob Taylor
Susanne Taylor
Tamie Taylor
Warren Tessler **IK**
Bill & Ann Testerman **SS**
Bill & Joan Tezak
Cecil Thomas
Suzanne Thomas
Lana Thompson
Patricia Thompson & Lee Patza **IK**
Robert & Margaret Thompson
Ron & Nada Thompson
Phyllis Thoreson
Kathy Thornburgh **IK** **SS**
Stuart & Lois Thorson
Jan & Bob Tivel
Shirley Tjersland
David & Christine Towne
Melita & Peter Townsend
Barbara Trask & Ger van den Engh **IK** **A**
Richard & Carol Treston
Kent Turner & Ellen Anderson **SS**
Mark Turner & Nicole Holbert
Gerald Tuttle & Kathleen Gorham
Steve & Valerie Ufer
Carl Ullman
Kathryn Utter
Timothy & Kelly Van Horn
Carol Van Iterson
Helen & Jan Van Lohuizen
Rick & Shelley Van Pelt
Paul & Rene Vance
Andrew Vanderhoof
Gary & Karen Vassallo
Karen & Jim Vedder
Lawrence Verbano
Jane & Bruce Vilders **IK**
Jane Vincent & Erik Hulsey
George & Laura Jane Vivertete
Gregg & Erin von Femppe **SS**
Lea von Pressentin
Kari Vonnegut **IK**

Jane Wagner & Bruce Bollert
Patricia Waite
Elise & Duff Walker
Jim & Betsy Walker
Wendy Wall & Jon Richardson
Diane & John Wallace
Kristine Wallen
Daniel Walters & Mary Petty
Warren & Linda Walz **IK**
Mike & Lisa Wandler
Regina Wandler **IK**
Dederick Ward & Susan Parke **IK**
Pamela Warren
Ronald Watts
John & Jo Ann Webster
Pat & Strand Wedul
Regan Weeks & Scott Petersen
Saul & Shelley Weisberg
Dave Weitzel & Kayle Shulenberg **IK**
Sarah Welch & Jon Riedel
Sherry & Mike Wenger
Keith Wentworth
Ellen Wertheimer & Mark Rahdert
Merrilou & Lyle Wesen
Ron & Jan Wesen
Carol & Robert Westcott
Steve & Kathryn White
Joanne Whitehead
Jerry & Carol Whitfield
Kathy Whitman
Don Wick **IK**
Cathie Wicklund
Gary Wickman
Harold Wiggers
Keith & Jan Wiggers **A**
Wiggin, Cheryl & Terry
Clay Wilcox
Drew & Tracy Wilkens
John & Diane Wilkinson
Barbara Williams
Christa & John Williams
Hannah Williams & Garrett Knoll
Joan Williams
Owen Williams
April & Brian Williamson
Cheryl Willis
Janice & M Wills
Cheryl & Raymond Wilson
Martha Wilson
Susan Wilson & Eric Hall **IK**
Ben & Sloane Winkes
Gus Winkes
Ken & Anne Winkes
Mary Winkes
Catherine Winters
Elsa Wise **A**
David & Joanne Witiak
Lynn Wohlers
Susan & Gregory Woirel
Carmen Wolfisberg
Chester Wood
Judy Gamble & Todd Wood
Ian Woofenden **IK**
Annette Woolsey & Jim Shiflett
Jennifer & William Woyski **A**
Katherine Woyski
Janet & Richard Wright
Laura Wright
Nora Wright
Philip & Carolynne Wright **A**
Andrea Xaver & Elizabeth Stewart
Kathy & John Yaeger
Brent & Rebekah Young
Danielle & Mark Young **IK**
David & Pat Young
Joanne Young
Sara Young & Wade Melton
Yadira Young
Sabrina Zeise **IK**
Carrie Zerjav & Nathan Moore
Jim & Kay Zielski
Gloria Zillig
Jane Zillig & Paul Ingalls **IK**
Marisue Zillig
Barbara Zimmerman
Shelby Zimmerman
Robert Zwick & Mary Kuebelbeck
Gerald & Mary Zyskowski
Stan Zyskowski **A**



RETURN SERVICE REQUESTED

Non-Profit Org.
U.S. Postage Paid
Mount Vernon, WA
Permit No. 195

PO Box 1017
1020 S Third Street
Mount Vernon, WA 98273
www.skagitlandtrust.org
360-428-7878

Skagit Land Trust conserves wildlife habitat, agricultural and forest lands, scenic open space and shorelines for the benefit of our community and as a legacy for future generations.

Annual Picnic July 28th 11am-2pm Cascadian Home Farm

Join us at Cascadian Home Farm near Rockport, WA for our annual members picnic. Feel free to bring a friend! The Trust holds a conservation easement on 56 acres of forest directly behind the farm. We'll have nature walks, activities for the kids, and of course delicious food to share.

RSVP at skagitlandtrust.org or call us, 360-428-7878.

Upcoming Trust Events & Workparties



**Join us for an upcoming event
RSVP at skagitlandtrust.org, or call 360-428-7878.**

- 7/6/19 - Utopia Stewardship and Nature Walk
- 7/14/19 - Samish Flower Farm Stewardship
- 7/14/19 - Samish Flower Farm Community Meeting
- 8/3/19 - Fidalgo Bay Carstens Stewardship
- 9/4/19 - Cedar Legacy Circle Appreciation Event